



Vehicle Concept Characteristics - LV 41.4005.10051

UPPER STAGE

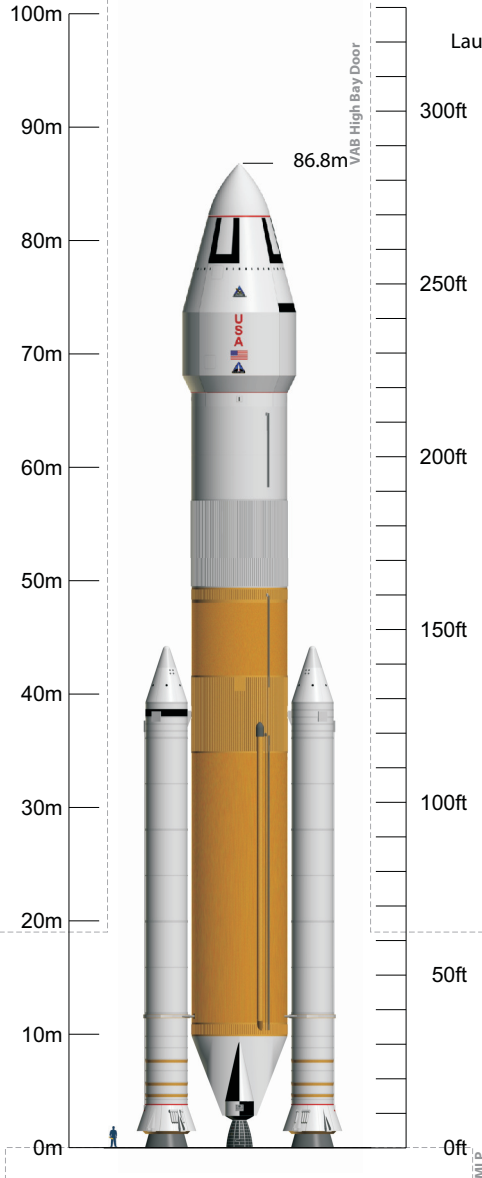
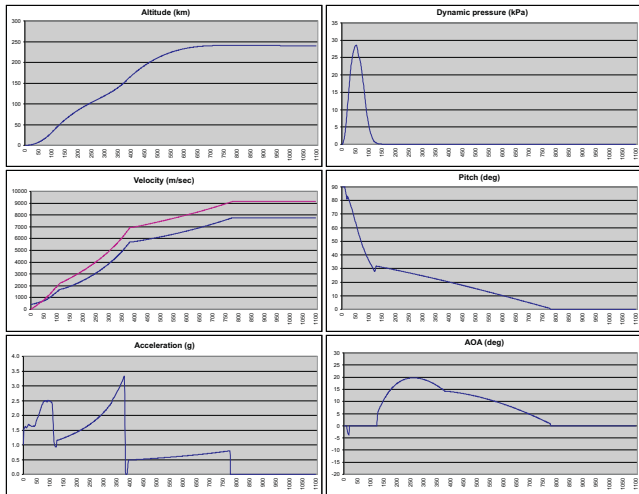
Design Heritage	Boeing ACES / Lockheed-Martin WBC
Propellants	LOX / LH2
Maximum Gross Propellant	397,261lb (180,195kg)
Usable Ascent Propellant	154,920lb (70,271kg)
Ascent Flight Performance Reserve	6,493lb (2,945kg)
Usable Post-Ascent Propellant	-
Post-Ascent Flight Performance Reserve	-
Unusable Residuals	3,884lb (1,762kg)
Ascent In-Flight Losses	154lb (70kg)
RCS Propellant	992lb (450kg)
Propellant Offload	57.77%
Stage pmf	0.9303
Dry Mass	25,605lb (11,614kg)
Burnout Mass	29,489lb (13,376kg)
# Engines / Type	4 / RL-60
Engine Thrust (@ 100%) Vac	64,992lbf (29,480kgf / 289,100N)
Engine Isp (@ 100%) Vac	459.0s
Mission Power Level	100.0%
Upper Stage Ascent Burn Time	390.9s
LEO Loiter Period	4 + 1 days
Pre-TLI Overboard Mass	-
ASE*	1,102lb (500kg)

DYNAMICS

Thrust : Weight @ Liftoff	1.527 : 1
Max Dynamic Pressure	598.9psf (28,676Pa)
Max g's During Ascent	3.33g
Insertion Altitude	130.0nmi (240.8km)

ASCENT PERFORMANCE

Delivery Orbit	130.0 x 130.0nmi, 29.0°
Payload w/ regular NASA GR&A's	231,469lb (104,993kg) †
Payload w/ additional 10% Reserve	208,322lb (94,493kg) †



Launch Site

KSC LC-39 (Latitude: 28.6084°)

GLOW

Payload Fairing	4,817,864lb (2,185,346kg)
Payload Envelope	32.8 x 18.4ft (10.0 x 5.6m)
Payload Fairing Jettison Mass	30.2 x 18.4ft (9.2 x 5.6m)
Payload Fairing Jettison	15,916lb (7,219kg)
Launch Abort System Jettison Mass	333.7s @ 72.1nmi
Launch Abort System Jettison	-

BOOSTERS (each)

Design Heritage	Shuttle RSRM - Flown Unchanged
Propellants	PBAN
Usable Propellant	1,111,604lb (504,215kg)
Stage pmf	0.8561
Dry Mass	183,948lb (83,437kg)
Burnout Mass	186,864lb (84,760kg)
# Boosters / Type	2 / 4-segment Shuttle RSRM
Booster Thrust (@ 0.7s) SL	2,892,912lbf (1,312,203kgf / 12,868,314N)
Vac	3,142,302lbf (1,425,324kgf / 13,977,656N)
Booster Isp (@ 0.7s) SL	237.0s
Vac	269.1s
Booster Burn Time	123.8s

CORE STAGE

Design Heritage	Shuttle Super Light Weight Tank ET
Propellants	LOX / LH2
Gross Propellant	1,621,191lb (735,360kg)
Usable Ascent Propellant	1,604,979lb (728,006kg)
Unusable Residuals	16,047lb (7,279kg)
In-Flight Losses	325lb (147kg)
Propellant Offload	0.00%
Stage pmf	0.9075
Dry Mass	147,479lb (66,895kg)
Burnout Mass	163,526lb (74,174kg)
# Engines / Type	4 / SSME-Block-II
Engine Thrust (@ 104.5%) SL	392,326lbf (177,956kgf / 1,745,155N)
Vac	490,847lbf (222,644kgf / 2,183,396N)
Engine Isp (@ 104.5%) SL	361.4s
Vac	452.2s
Mission Power Level	104.5%
Core Burn Time	384.1s

INTERSTAGE

Dry Mass	11,664lb (5,291kg)
----------	--------------------

* ASE is part of the Payload, not additional

† Ascent Performance for Jupiter-244 protects for Upper Stage Single-Engine-Out and full FPR